

STEW-MAP

THE STEWARDSHIP MAPPING AND ASSESSMENT PROJECT

Image courtesy Flickr user bogdog Dan

Chicago Stew-MAP 2010-2011

Data Summary

- This report summarizes the survey responses from 369 groups, municipalities, and organizations that voluntarily filled out the online Stew-MAP survey between November 2010 and November 2011.
- Each group does environmental stewardship work in the Chicago Wilderness region. This report offers basic descriptive summaries of the survey data.

***Note that many survey takers skipped some questions so the 'n' reported for each question indicates how many people answered that question.*

STEW-MAP

THE STEWARDSHIP MAPPING AND ASSESSMENT PROJECT

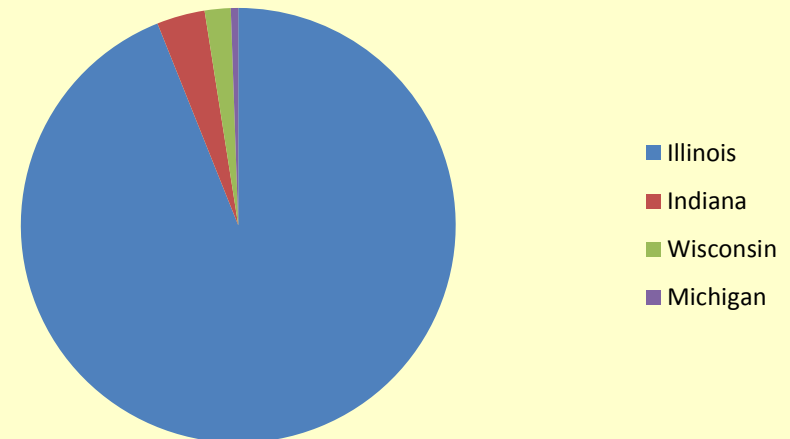
What *state* is your group/organization's main office/meeting place/regional headquarters in?

(n = 363)

So far, we have heard primarily from groups in Illinois

<i>State</i>	<i>Number of groups/orgs</i>	<i>Percentage of groups/orgs</i>
Illinois	341	93.9%
Indiana	13	3.6%
Wisconsin	7	1.9%
Michigan	2	0.6%
Total	363	100.0%

Number of groups/orgs



STEW-MAP

THE STEWARDSHIP MAPPING AND ASSESSMENT PROJECT

What *city or town* is your group/organization's main office/meeting place/regional headquarters in?

(n = 363)

[Please note: This list shows only those cities and towns with 2 or more groups/organizations.]

Chicago, IL (191, 52.6% of the total)

Evanston, IL (11)

Oak Park, IL (7)

Elgin, IL (6)

Glenview, IL (5)

Barrington, IL (4)

Frankfort, IL (4)

Schaumburg, IL (4)

Batavia, IL (3)

Blue Island, IL (3)

Joliet, IL (3)

Oregon, IL (3)

Riverside, IL (3)

Wheaton, IL (3)

Woodstock, IL (3)

Yorkville, IL (3)

Buffalo Grove, IL (2)

Franklin Park, IL (2)

Geneva, IL (2)

Grayslake, IL (2)

Gurnee, IL (2)

Hammond, IN (2)

Long Grove, IL (2)

Matteson, IL (2)

Michigan City, IN (2)

Naperville, IL (2)

Park Ridge, IL (2)

Portage, IN (2)

Skokie, IL (2)

Waukegan, IL (2)

Westchester, IL (2)

Wilmette, IL (2)

STEW-MAP

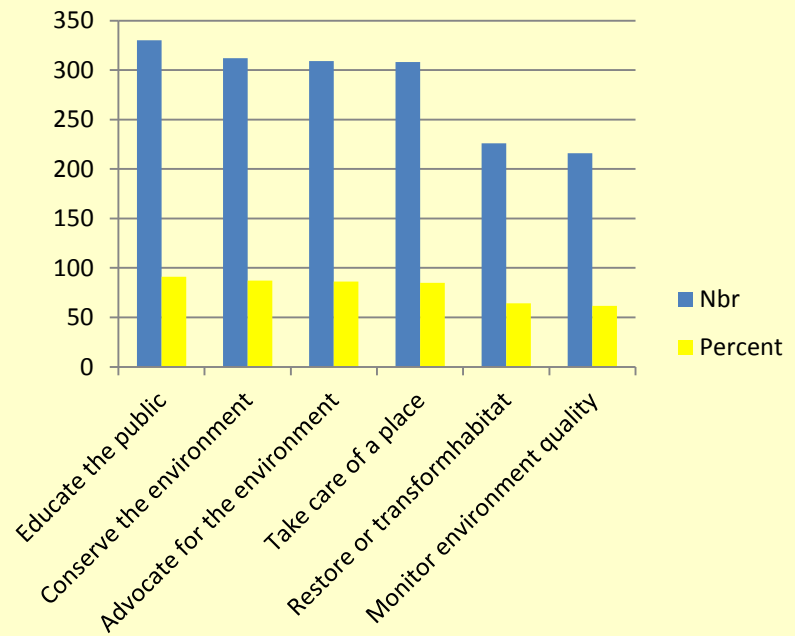
THE STEWARDSHIP MAPPING AND ASSESSMENT PROJECT

Image courtesy Flickr user bogdog Dan

Does your group/organization do any of the following?

(respondents could choose multiple answers.)

	N	%
Educate the public	330	90.91
Conserve the environment	312	87.15
Advocate for the environment	309	86.31
Take care of a place	308	85.08
Restore...transform habitat	226	64.2
Monitor environmental quality	216	61.71



STEW-MAP

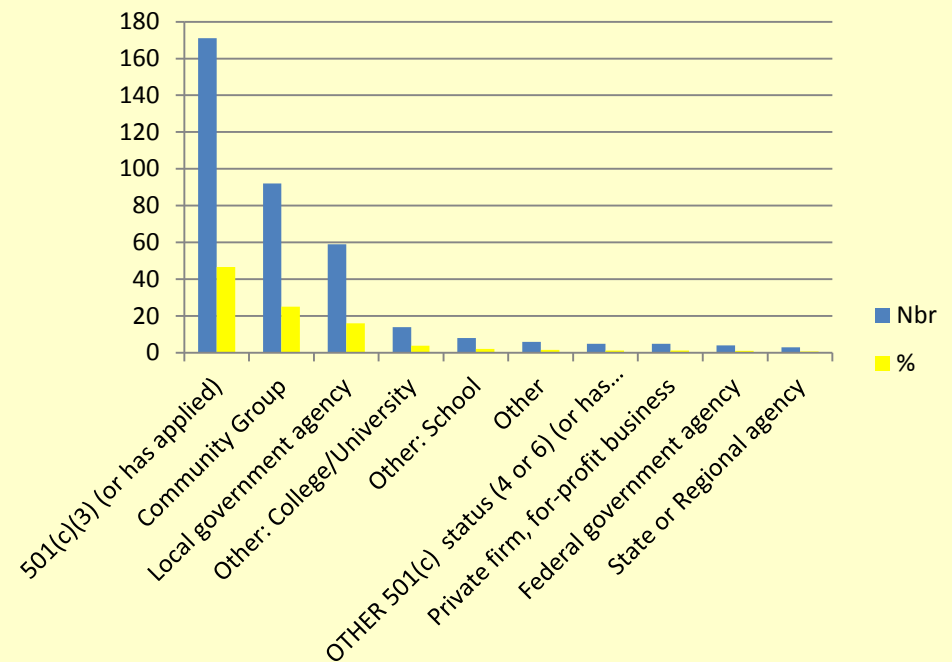
THE STEWARDSHIP MAPPING AND ASSESSMENT PROJECT

Image courtesy Flickr user bogdog Dan

What is your group/organization's legal designation?

(n = 367; Respondents selected one answer)

	N	%
501(c)(3) (or has applied)	171	46.59
Community Group	92	25.07
Local government agency	59	16.08
Other: College/University	14	3.81
Other: School	8	2.18
Other	6	1.63
OTHER 501(c) status (4 or 6) (or has applied)	5	1.36
Private firm, for-profit business	5	1.36
Federal government agency	4	1.09
State or Regional agency	3	0.82



STEW-MAP

THE STEWARDSHIP MAPPING AND ASSESSMENT PROJECT

What does your group/organization work on?

(n = 363; respondents could choose
multiple answers.)

	N	%
Environment	321	88.43
Education	220	60.61
Community improvement & capacity building	144	39.67
Youth	125	34.44
Recreation sports	119	32.78
Animal related	98	27
Arts culture	98	27
Public health	84	23.14
Other	75	20.66
Energy efficiency	72	19.83
Economic development	69	19.01
Research & technology	60	16.53
Toxic pollution	58	15.98
Transportation	54	14.88
Employment	48	13.22
Human services	37	10.19
Faith based activities	31	8.54
Housing shelter	25	6.89
Crime criminal justice	21	5.79
Power and electricity generation	15	4.13
International national security	10	2.75
legal services	8	2.2

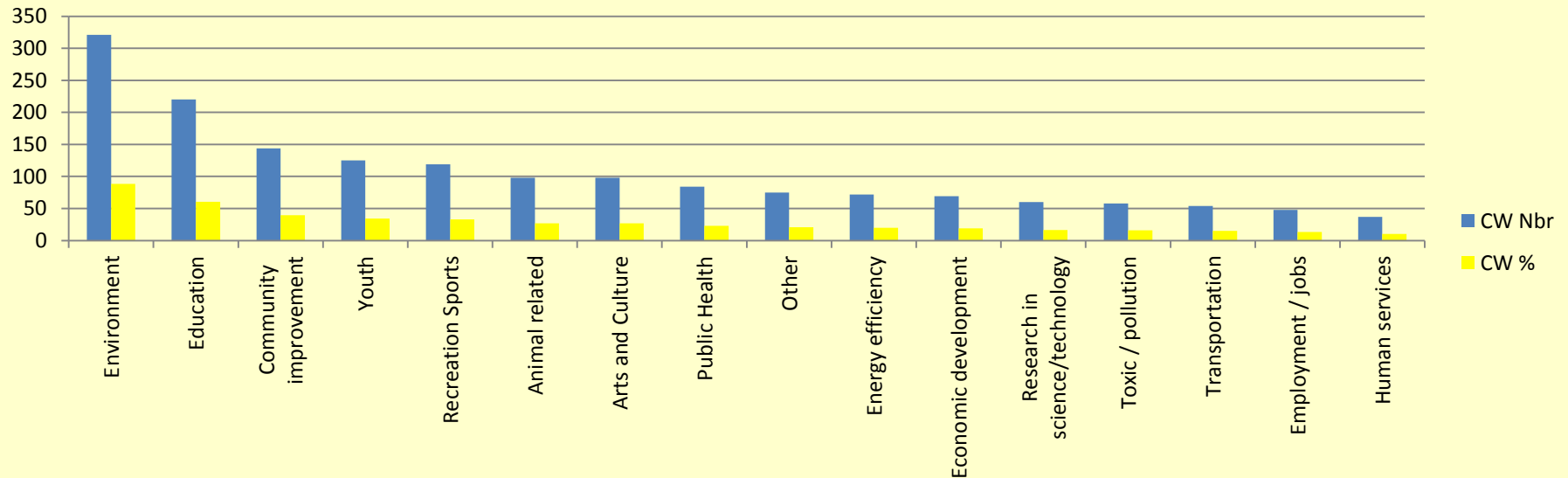
STEW-MAP

THE STEWARDSHIP MAPPING AND ASSESSMENT PROJECT

Image courtesy Flickr user bogdog Dan

What does your group/organization work on?

(n = 363; respondents could choose multiple answers.; response categories with at least 10% shown below)



STEW-MAP

THE STEWARDSHIP MAPPING AND ASSESSMENT PROJECT

What is your group/organization's primary focus?

(n = 361, Respondents selected one answer)

	N	%
Environment	180	49.86
Education	59	16.34
Community improvement / capacity building	33	9.14
Other	14	3.88
Faith-based activities	13	3.6
Recreation / Sports	10	2.77
Youth development	10	2.77
Public Health	6	1.66
Animals / wildlife	5	1.39
Arts / culture	5	1.39
Economic development	5	1.39
Energy efficiency	5	1.39
Housing / shelter	5	1.39
Employment / jobs	2	0.55
Human services	2	0.55
Toxic / pollution	2	0.55
Transportation	2	0.55
Crime / criminal justice	1	0.28
Legal services / Civil rights	1	0.28
Research in science / technology	1	0.28

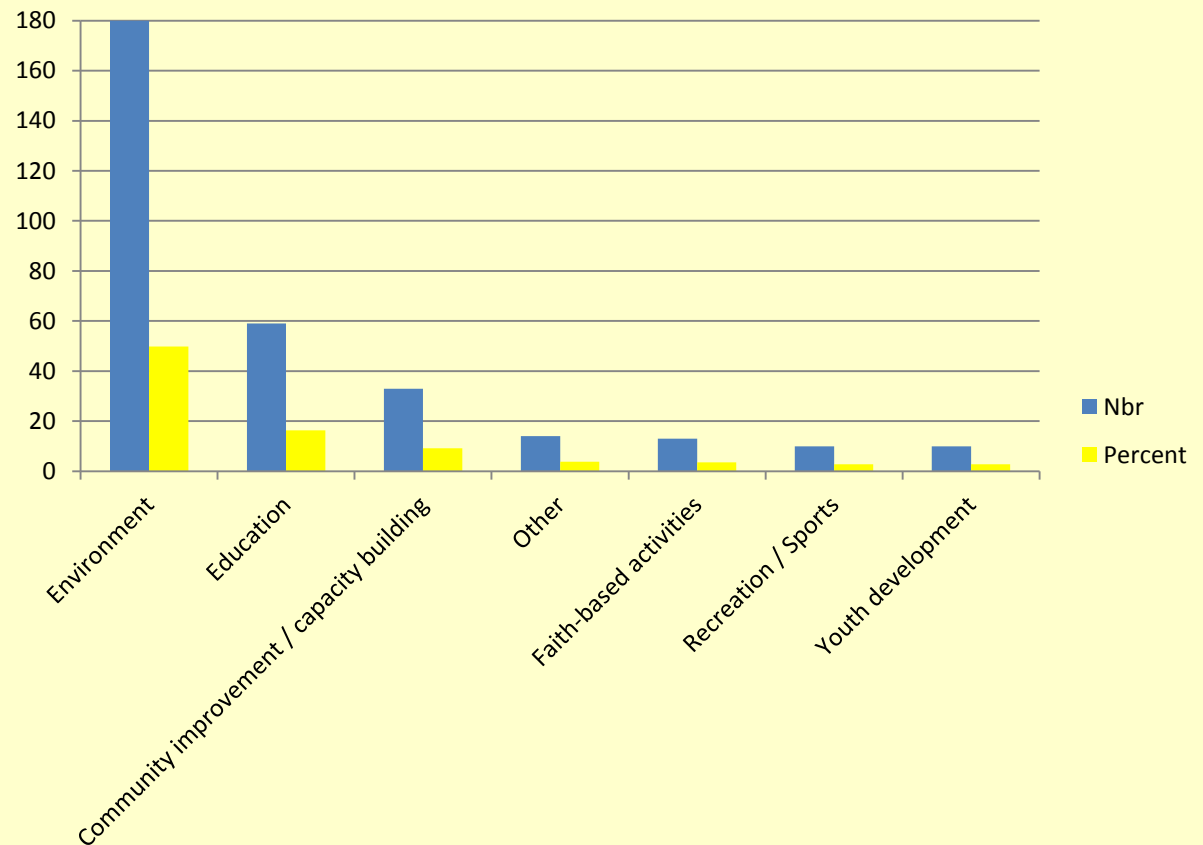
361

STEW-MAP

THE STEWARDSHIP MAPPING AND ASSESSMENT PROJECT

What is your group/organization's primary focus?

(n = 361, Respondents selected one answer; top 7 categories shown)



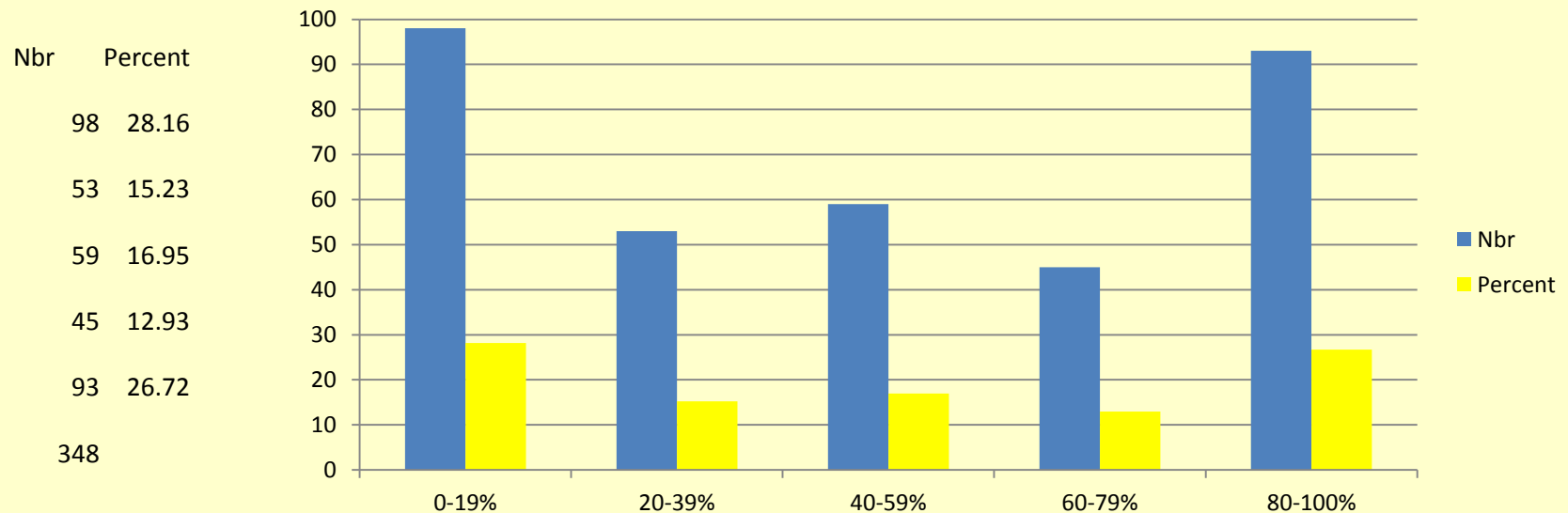
STEW-MAP

THE STEWARDSHIP MAPPING AND ASSESSMENT PROJECT

Image courtesy Flickr user bogdog Dan

Considering all of the programs, activities, and services your group/organization works on, what percentage of your effort has been for stewardship during the past year?

(n = 348)



STEW-MAP

THE STEWARDSHIP MAPPING AND ASSESSMENT PROJECT

What type(s) of setting(s) has your group/organization physically done stewardship work in within the past year?

(n = 343; respondents could choose multiple answers.)

	N	%
Prairie	171	49.85
Woodland	158	46.06
Community garden	137	39.94
Wetland	133	38.78
Park	111	32.36
Trails bike paths	108	31.49
Rain garden	105	30.61
Watershed / sewershed	99	28.86
Stream / river / canal	93	27.11
School yard	86	25.07
Vacant land	79	23.03
Public right of way	64	18.66
Public grounds	63	18.37
Planter	63	18.37
Waterfront / beach / shoreline	61	17.78
Green building	56	16.33
Public garden	52	15.16
Other	52	15.16
Residential grounds	44	12.83
Green roof	38	11.08
Playing ball field	32	9.33
Urban farm	26	7.58
Greenway / rail / trail	26	7.58
Dog run	17	4.96
Brownfield	17	4.96
Courtyard atrium plaza	14	4.08
Landfill	2	0.58

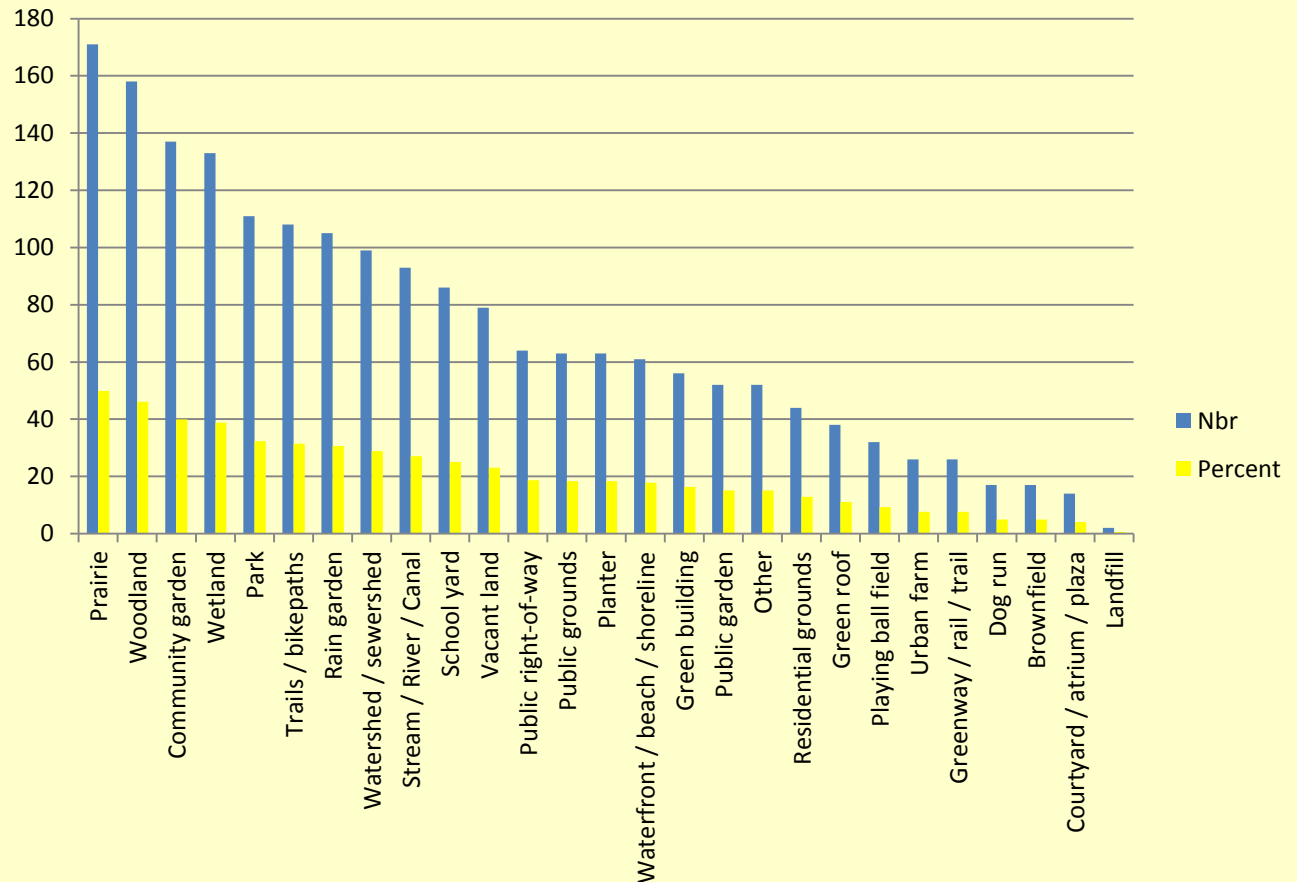
STEW-MAP

THE STEWARDSHIP MAPPING AND ASSESSMENT PROJECT

Image courtesy Flickr user bogdog Dan

What type(s) of setting(s) has your group/organization physically done stewardship work in within the past year?

(n = 343; respondents could choose multiple answers.)



STEW-MAP

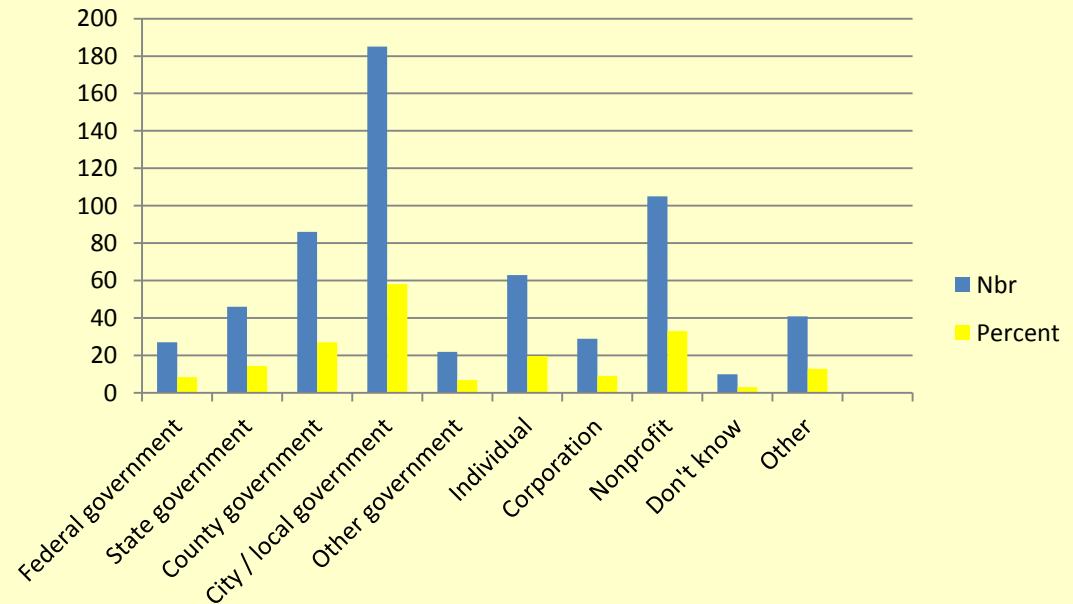
THE STEWARDSHIP MAPPING AND ASSESSMENT PROJECT

Image courtesy Flickr user bogdog Dan

Who owns the property or properties on which your group/organization has physically done stewardship work within the past year?

(n = 318; respondents could choose multiple answers.)

	N	%
City local government	18	58.18
Nonprofit	10	33.02
County government	5	27.04
Individual	86	19.81
State government	63	14.47
Other	46	12.89
Corporation	41	9.12
Federal government	29	8.49
Other government	27	6.92
Don't know	22	3.14



STEW-MAP

THE STEWARDSHIP MAPPING AND ASSESSMENT PROJECT

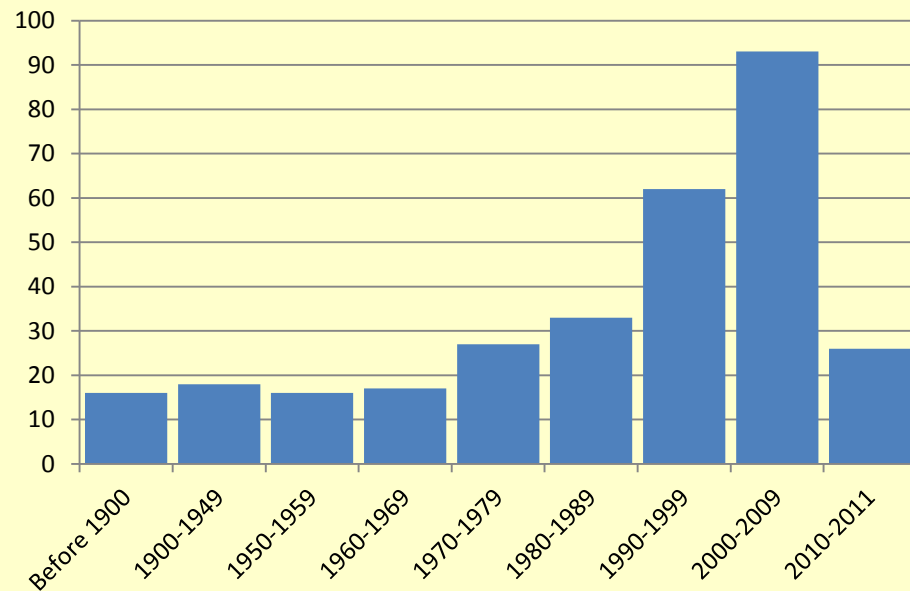
Image courtesy Flickr user bogdog Dan

Approximately what year was your group/organization founded?

Note: for national or regional groups/organizations please tell us the approximate year your local chapter was founded.

(n = 292)

	N	%
Before 1900	16	5.19
1900-1949	18	5.84
1950-1959	16	5.19
1960-1969	17	5.52
1970-1979	27	8.77
1980-1989	33	10.71
1990-1999	62	20.13
2000-2009	93	30.19
2010-2011	26	8.44
	292	



STEW-MAP

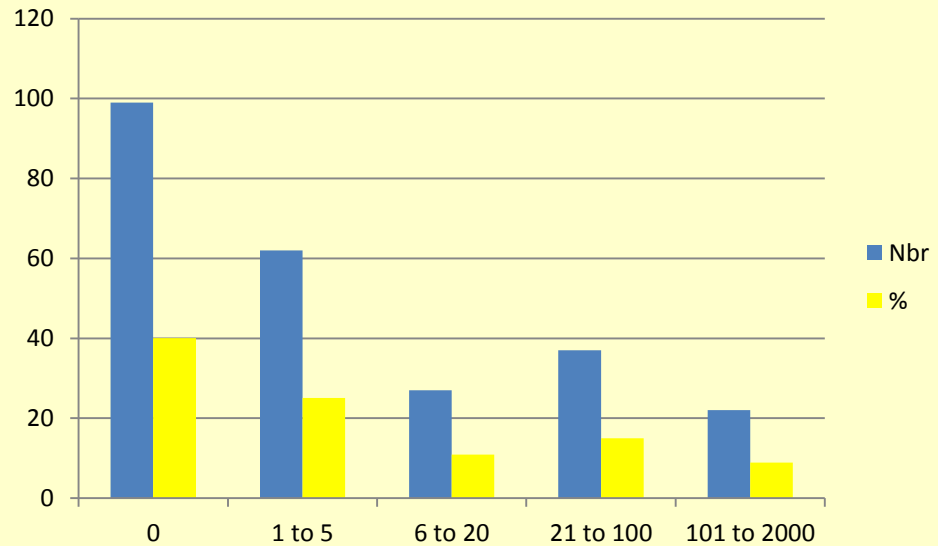
THE STEWARDSHIP MAPPING AND ASSESSMENT PROJECT

Image courtesy Flickr user bogdog Dan

Approximately how many *full-time staff* does your group/organization have?

Note: for national groups/organizations please provide regional information.
(n = 247)

	N	%
0	99	40.08
1 to 5	62	25.1
6 to 20	27	10.93
21 to 100	37	14.98
101 to 2000	22	8.91
	247	



STEW-MAP

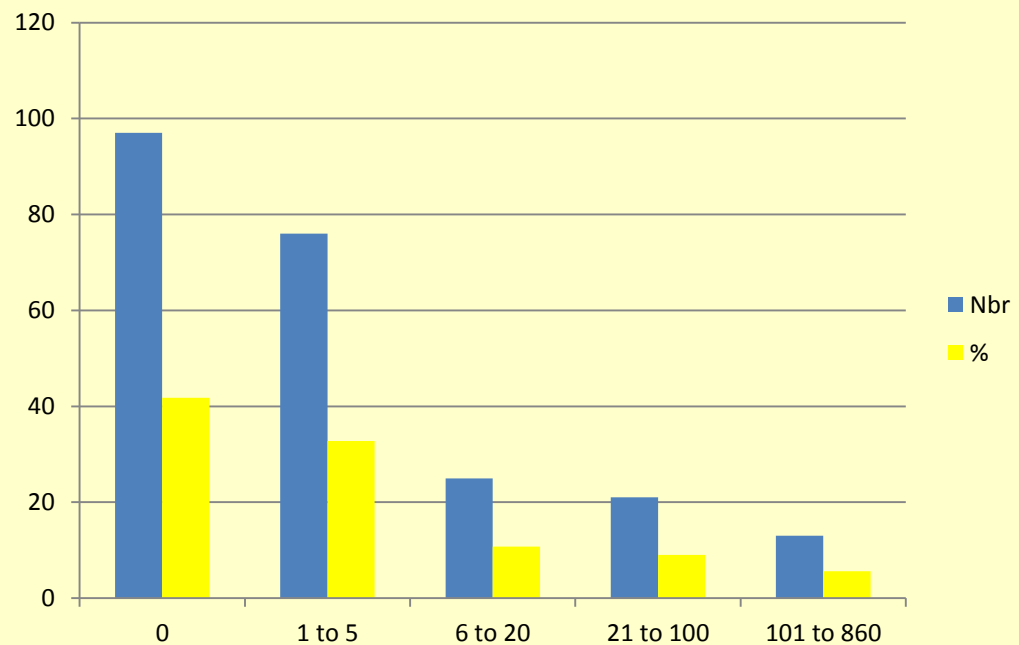
THE STEWARDSHIP MAPPING AND ASSESSMENT PROJECT

Image courtesy Flickr user bogdog Dan

Approximately how many *part-time staff* does your group/organization have?

Note: for national groups/organizations please provide regional information.
(n = 232)

	N	%
0	97	41.81
1 to 5	76	32.76
6 to 20	25	10.78
21 to 100	21	9.05
101 to 860	13	5.6
	232	



STEW-MAP

THE STEWARDSHIP MAPPING AND ASSESSMENT PROJECT

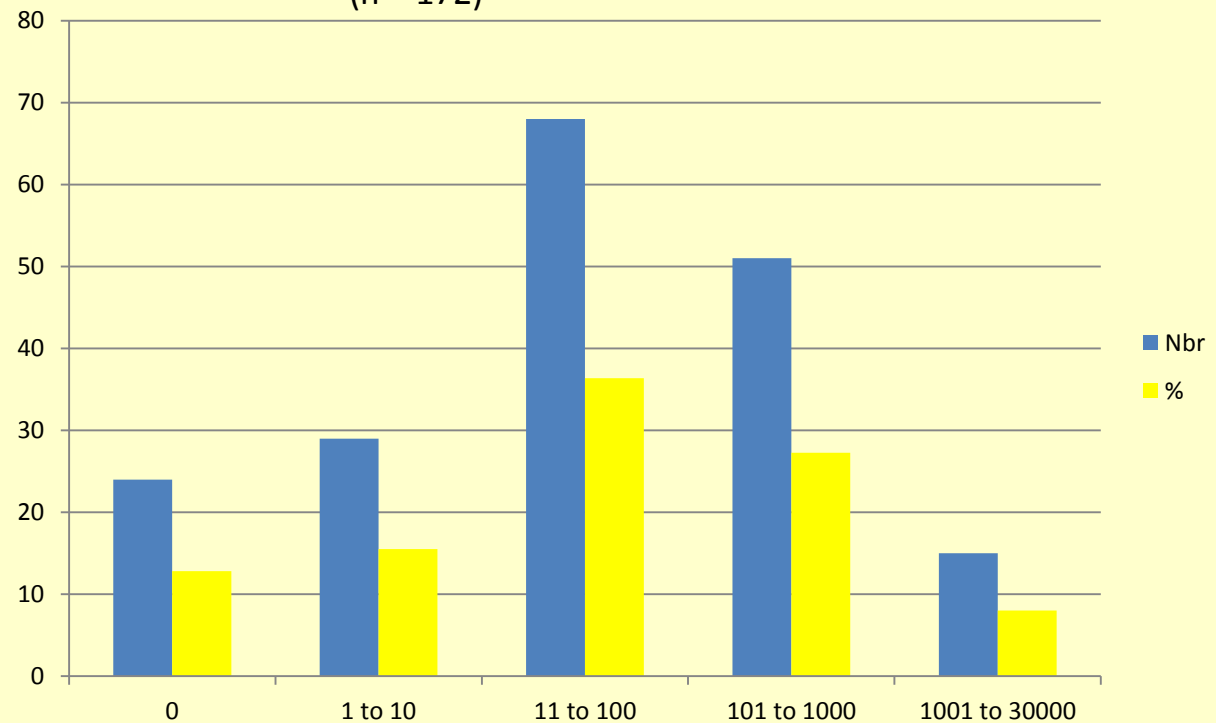
Image courtesy Flickr user bogdog Dan

Approximately how many *members* does your group/organization have?

Note: for national groups/organizations please provide regional information.

(n = 172)

	N	%
0	24	12.83
1 to 10	29	15.51
11 to 100	68	36.36
101 to 1000	51	27.27
1001 to 30000	15	8.02
	172	



STEW-MAP

THE STEWARDSHIP MAPPING AND ASSESSMENT PROJECT

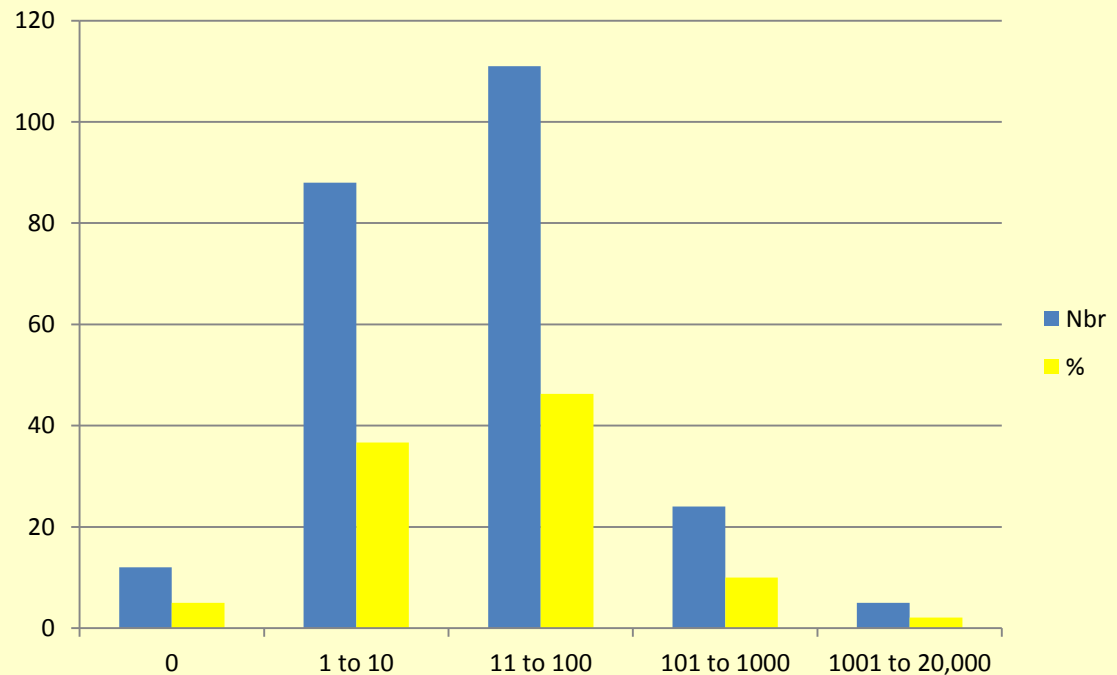
Image courtesy Flickr user bogdog Dan

Approximately how many *regular volunteers* does your group/organization have?

Note: for national groups/organizations please provide regional information.

(n = 240)

	N	%
0	12	5
1 to 10	88	36.67
11 to 100	111	46.25
101 to 1000	24	10
1001 to 20,000	5	2.08
	240	



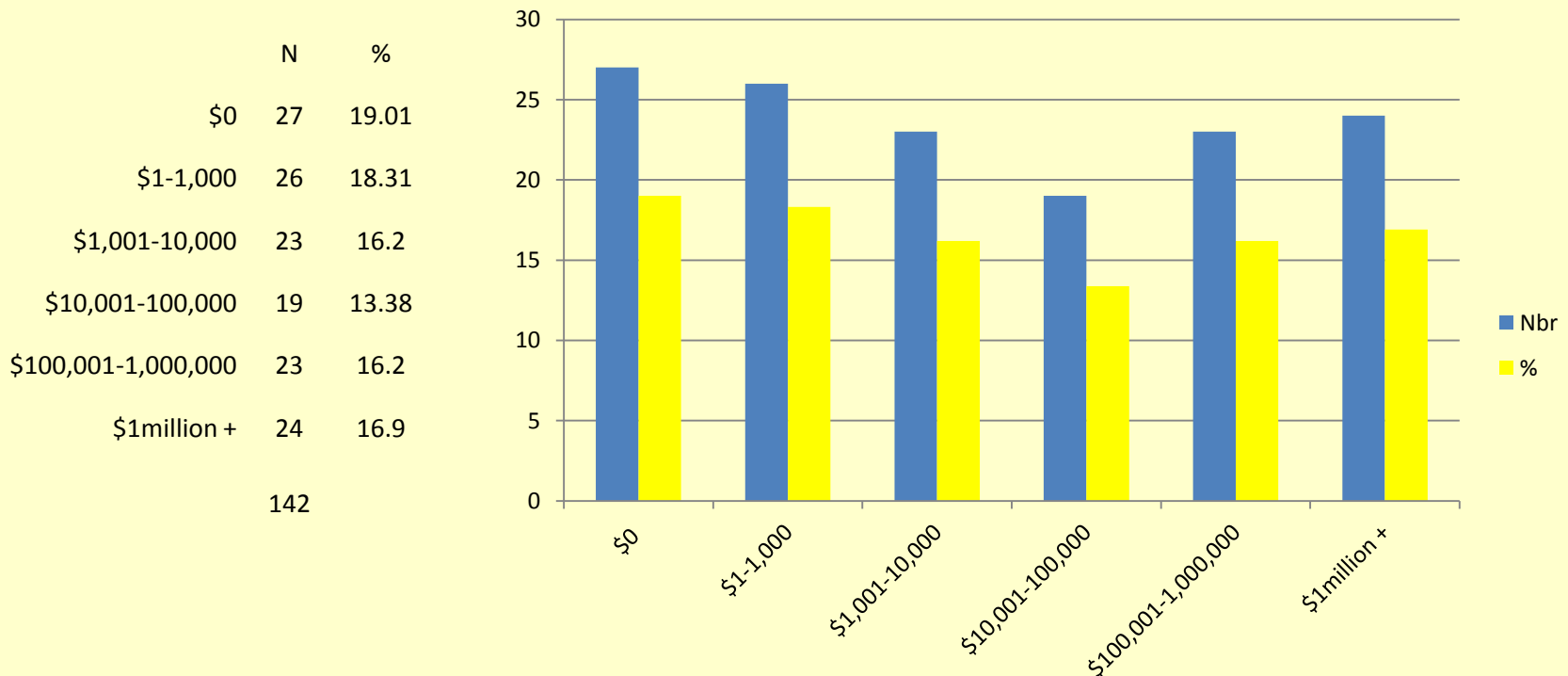
STEW-MAP

THE STEWARDSHIP MAPPING AND ASSESSMENT PROJECT

Image courtesy Flickr user bogdog Dan

What is your group/organization's estimated annual budget for the current year?

(n = 142)



STEW-MAP

THE STEWARDSHIP MAPPING AND ASSESSMENT PROJECT

Does your group/organization belong to any coalitions, partnerships, or working groups/organizations that share information, plan strategy, or coordinate activities?

(n = 257)

